

ZINC PRIMER

Corrosion protective primer, easy to paint over.

A Zinc-Phosphate primer for metal surfaces. Dries quickly. Improves adhesion of the finishing coating. A corrosion protective additive slows down corrosion. Can be painted over with all kinds of single component paints, already after one hour. Ideal topcoat: Galva Brite or Galva Shine.



Ref.	SIZE
30419	Aerosol 500 ml

GALVA BRITE

Protective, final coating with a shiny aluminum aspect.

A single component Zinc-Aluminum coating. Protects against corrosion and forms a glossy aluminum look on the coated surface. Good adhesion to metal surfaces. Results in a unique combination of flexibility and hardness. For perfect results please use CRC Zinc Primer first.



Ref.	SIZE
30423	Aerosol 500 ml

GALVA SHINE

Touch-up paint for hot galvanised pieces.

Protective coating with an exceptional gloss. Gives the work piece the aspect of a freshly hot galvanised piece. The film is very resistant and keeps its brilliance in time. Ideal paint for touch-ups of freshly galvanised pieces. The paint can also be used to give pieces a new zinc look. For perfect results please use CRC Zinc Primer first.



Ref.	SIZE
32319	Aerosol 500 ml

INOX 200

Anti-corrosion coating for stainless steel surfaces.

Coating with good anti-corrosion properties and a nice look, identical to stainless steel (inox). The coating is fast drying, resistant to high temperatures and has excellent adhesion properties. Ideal touch-up paint : to be used after welding or when mounting a stainless steel construction. Will cover and protect discolored welding seams.



Ref.	SIZE
32337	Aerosol 500 ml

GALVACOLOR

Aerosol paint that protects the metal from corroding.

Zinc-phosphate protective coating. Ideal for identification of utility conduits. Primer and topcoat in one. Short drying time. Official RAL identification colors. Conform to the protect category C3 (ISO 12944-2).

Ref.	SIZE	COLOR	RAL
20563	Aerosol 500 ml	Yellow	1004
32170	Aerosol 500 ml	Orange	2011
20566	Aerosol 500 ml	Red	3000
32079	Aerosol 500 ml	Blue	5005
20572	Aerosol 500 ml	Blue	5012
32702	Aerosol 500 ml	Anthracite	7016
32080	Aerosol 500 ml	Grey	7035
20581	Aerosol 500 ml	Black	9005
20584	Aerosol 500 ml	Silver	9006
20587	Aerosol 500 ml	White	9010

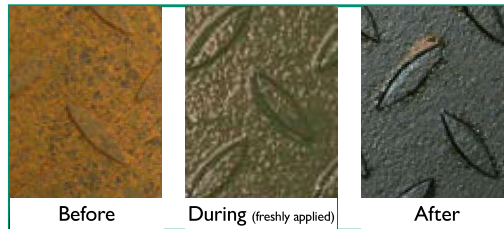


RUST CONVERTER

Rapidly converts rust into a tough, protective surface.

Transforms the rust layer into a durable coating. Forms a tough barrier against corrosion. The final black coating forms a natural protection for the valuable steel structure. Easy and ready to use - not necessary to paint afterwards. Applicable with a normal paint brush. Immediate results; visible within 5 minutes (depending circumstances). Water based product. Contains zinc pigments. Can be over-painted with esthetic top coat e.g. CRC Galvacolor.

Ref.	SIZE
30067	Bulk 750 ml



RUST REMOVER

Removes corrosion and/or rust from metals.

CRC Rust Remover is a concentrated scale and rust remover. Based on acid, it removes rust and cleans metal surfaces from scale, tarnish, oxidation and stains.

Ref.	SIZE
30610	Bottle 250 ml
10752	Bulk 5 L
30611	Bulk 20 L



FERROKLEEN

Cleans painted and bare metal surfaces contaminated with rust, lime, algae, oils and tar.

Takes rust and rust stains on painted or plastic surfaces away. Effective against a wide range of scales. Non flammable. Slightly foaming. Composed of > 90% anorganic components and biodegradable organic components. Not classified as dangerous for the aquatic environment.

Ref.	SIZE
30089	Bulk 5 kg
30199	Bulk 20 kg



ANTI-CORROSION - DIAGRAM

